



# JEFFERSON COUNTY SOIL AND WATER CONSERVATION DISTRICT

www.jeffersoncountyswcd.org

25451 State Route 12, Watertown, NY 13601

Telephone (315) 782-2749

Fax (315) 782-3054

## Jefferson County Reforestation Timber Sale Prospectus

Jefferson County has authorized Jefferson County Soil & Water Conservation District to offer for sale 635 trees located on approximately 85 acres of Jefferson Counties 5,500 acres of Reforestation Lands. The sale is in the Town of Worth, Jefferson County, New York.

**Access:** To access the property from Adams NY, NYS Rte 11/ County Rte 189 intersection travel East on County Rte 189 for 6 miles to the County Rte 189/ County Rte 93 Intersection, in Lorraine, NY. Travel East on County Rte 93 for appx. 4 miles, to the Landing of the first sale area. Continue to travel East on County Rte 93 appx.2 miles to the County Rte 93/ Nichols Road Intersection. Travel North on Nichols Road Appx. 1 mile to landing area of second sale area. Both landings are marked with 3 pink flags at landing/parking areas.

**Boundaries:** The property boundary is painted with Red or yellow Paint. The sale area is marked with three horizontal stripes of pink paint. The main landings are marked with pink flagging (see attached Timber sale Map).

**Tree Markings:** Trees to be harvested are marked with blue paint at breast height and at the stump. **Saw timber is marked with a dot, firewood and softwood pulp are marked with a vertical line, culls are marked with a "x"**. All trees to be harvested have a horizontal marking around the circumference of the tree for visibility to the harvester.

**Trees to be harvested: All potential bidders are encouraged to determine their own volume estimates. Volume estimates were made using International ¼” Log Rule.**

<b>Species</b>	<b>Number Trees</b>	<b>Volume- BDF'T</b>
Hard Maple	184	40,417
White Ash	257	42,044
Red Maple	6	1,168
Yellow Birch	12	1,926
Basswood	9	1,092
Black Cherry	14	2,964
White Pine	16	6,906
Norway Spruce	3	843
<b>Totals</b>	<b>501</b>	<b>97,360</b>
<b>Firewood</b>	<b>134</b>	<b>126 Tons</b>
<b>Total Trees</b>	<b>635</b>	

**Terms of Bidding**

- Bidders can view the timber at their convenience. If there are questions regarding the sale, please contact Jefferson County Soil and Water Conservation District, at 315-782-2749.
- Bids will only be accepted in sealed envelopes, by mail, or delivered in person to the address above.
- All bids must be received by 2:30 P.M., Monday, June 14, 2021 and bids will be opened at 3:30 P.M. on the same day. The person or firm awarded the bid will be promptly notified. All bidders will be notified in writing of the bid results.
- **Jefferson County Soil and Water Conservation District reserves the right to reject all bids if so desired.**
- The buyer will be required to execute a Timber Sale agreement with Jefferson County, through Jefferson County Soil and Water Conservation District, and **make full payment of the sale bid prior to July 1, 2021, and before any harvesting activities occur.**
- Prior to beginning the harvest, the Buyer will need to produce a valid NYS Workers Compensation Policy and a \$2 Million Dollar Liability Insurance policy with Jefferson County named as additionally insured.
- Prior to beginning the harvest, a second check for \$2,500 will be written to guarantee proper execution of the Timber Sale Agreement. The check will be written to Jefferson County Soil & Water Conservation District and will be held in an account until satisfactory completion of the sale agreement.
- The buyer will have until March 1, 2023 to remove the timber.

-----

**Timber Sale Bid Form**

I have examined the timber offered for sale by Jefferson County Soil & Water Conservation District on Jefferson County Reforestation Land located in the Town Of Worth, Jefferson County, New York, and hereby bid the following price:

**Total Bid Amount is \$** \_\_\_\_\_

\_\_\_\_\_ **dollars and** \_\_\_\_\_ **cents.**

Name: \_\_\_\_\_

Signature: \_\_\_\_\_

Address: \_\_\_\_\_

Phone Number \_\_\_\_\_

**Bids must be received by 2:30 P.M. June 14, 2021.**

**Send bids to:**

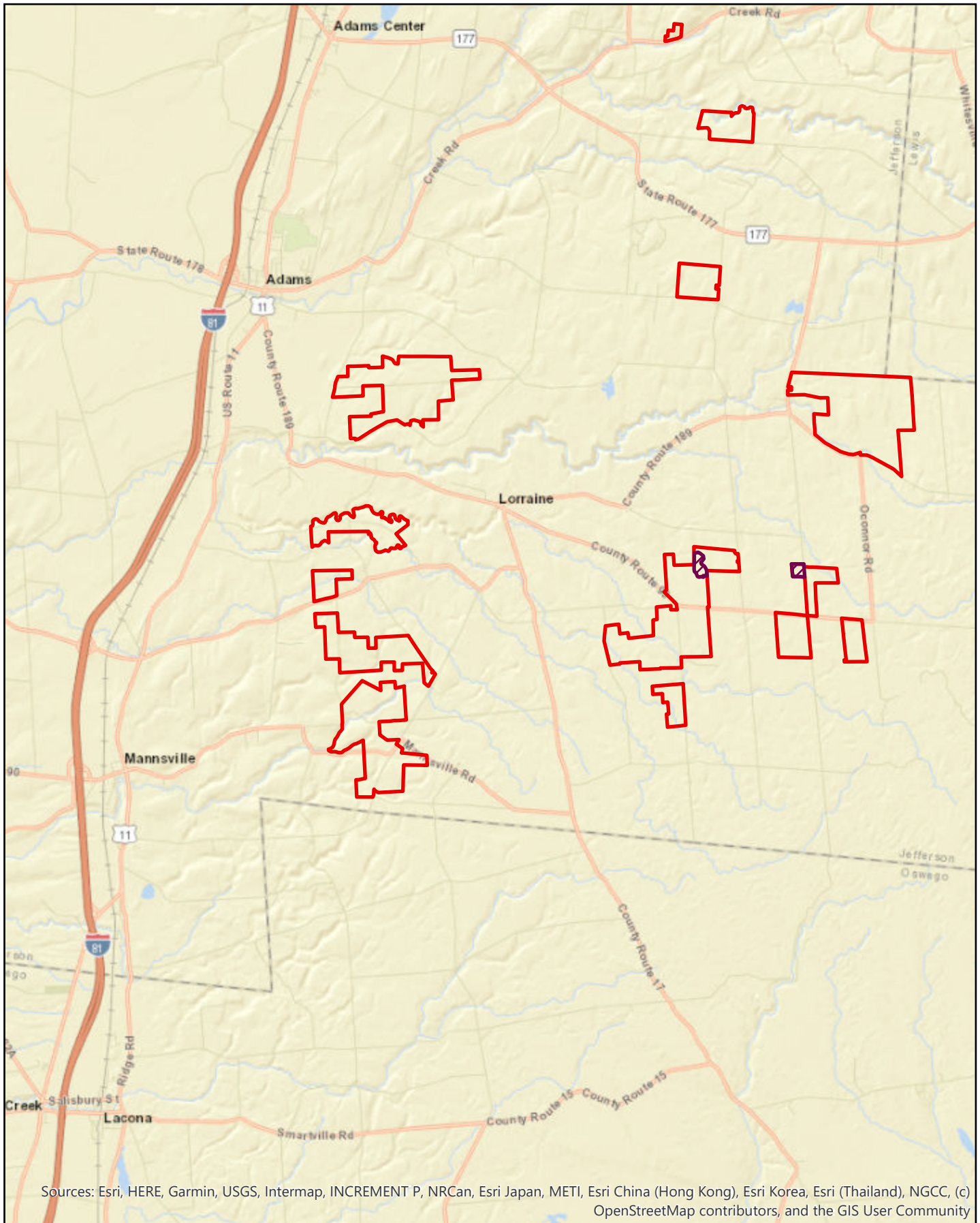
Jefferson County Soil & Water Conservation District

25451 State Route 12


Watertown, New York 13601

**Clearly mark the envelope "Westons Corners Lot and VanCamp Lot Timber Sale Bid".**

# Jefferson County Reforestation Lands 2021 Hardwood Sale Location Map

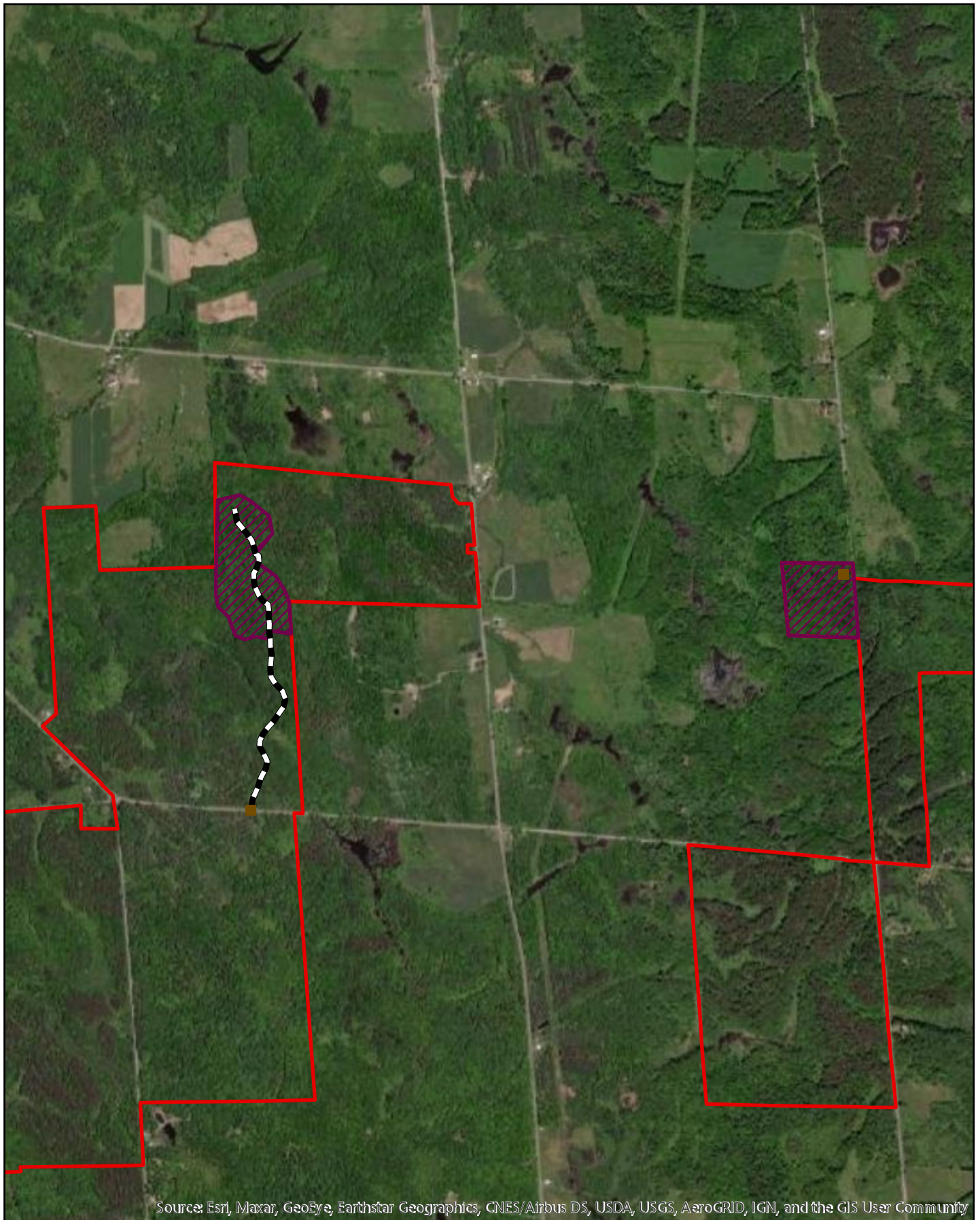


Sources: Esri, HERE, Garmin, USGS, Intermap, INCREMENT P, NRCan, Esri Japan, METI, Esri China (Hong Kong), Esri Korea, Esri (Thailand), NGCC, (c) OpenStreetMap contributors, and the GIS User Community

 SaleArea  Jefferson County Reforestation Lands



Jefferson County Reforestation Lands  
2021 Hardwood Sale Aerial Map



Source: Esri, Maxar, GeoEye, Earthstar Geographics, CNES/Airbus DS, USDA, USGS, AeroGRID, IGN, and the GIS User Community

- Landing
- ▬ SkidTrail
- ▨ SaleArea
- ▭ Jefferson County Reforestation Lands