



**JEFFERSON COUNTY
SOIL AND WATER CONSERVATION
DISTRICT**

www.jeffersoncountyswcd.org

25451 State Route 12, Watertown, NY 13601

Telephone (315) 782-2749

Fax (315) 782-3054

**Jefferson County Reforestation
Timber Sale Prospectus**

Jefferson County has authorized Jefferson County Soil & Water Conservation District to offer for sale 458 trees located on approximately 25 acres of Jefferson Counties 5,500 acres of Reforestation Lands. The sale is in the Town of Worth, Jefferson County, New York.

Access: To access the property from NYS Rte 177/ County Rte 189 intersection travel South on County Rte 189 for 2.4 miles to the County Rte 189/ County Rte 96 intersection. Travel east on County Rte 96 for appx. 1.4 miles, the timber sale land starts at the County Rte 96/ Forest Access Road intersection, marked with three pink flagging strips and lies North of County Rte 96. There is an access road that runs along the east side of the sale. The buyer may use this for access; the gate is unlocked.

Boundaries: The property boundary is painted with Red Paint. The sale area is marked with three horizontal stripes of green paint. The landing is marked with three pieces of pink flagging. The sale area is bound to the South by County Rte 96, West by Sandy Creek and a wetland flowing into Sandy Creek, North and East by green three striped paint (see attached Timber sale Map).

Tree Markings: Trees to be harvested are marked with blue paint at breast height. **Saw timber is marked with a horizontal line around the tree and firewood is marked with a vertical line.**

Trees to be harvested: All potential bidders are encouraged to determine their own volume estimates. Volume estimates were made using International ¼” Log Rule.

Species	Number Trees	Volume- BDFT
Hard Maple	9	1,448
Black Cherry	41	6,886
White Ash	164	26,143
Red Pine	70	14,046
Red Maple	3	495
Aspen	5	2,037
Totals	292	51,055
Firewood	166	149 Tons
Total Trees	458	

Terms of Bidding

- Bidders can view the timber at their convenience. If there are questions regarding the sale please contact Patrick Crast at Jefferson County Soil and Water Conservation District, at 315-405-7391.
- Bids will only be accepted in sealed envelopes, by mail, or delivered in person to the address above.
- All bids must be received by 2:30 P.M., Monday, August 25, 2025, and bids will be opened at 3:30 P.M. on the same day. The person or firm awarded the bid will be promptly notified. All bidders will be notified in writing of the bid results.
- **Jefferson County Soil and Water Conservation District reserves the right to reject all bids if so desired. The Minimum Bid for this Sale is \$14,000.00 (Fourteen thousand dollars and no/cents).**
- The buyer will be required to execute a Timber Sale agreement with Jefferson County, through Jefferson County Soil and Water Conservation District, and **make full payment of the sale bid prior to October 1, 2025, and before any harvesting activities occur.**
- Prior to beginning the harvest, the Buyer will need to produce a valid NYS Workers Compensation Policy and a \$2 Million Dollar Liability Insurance policy with Jefferson County named as additionally insured.
- Prior to beginning the harvest, a second check for \$2,500 will be written to guarantee proper execution of the Timber Sale Agreement. The check will be written to Jefferson County Soil & Water Conservation District and will be held in an account until satisfactory completion of the sale agreement.
- The buyer will have until March 1, 2027, to remove the timber.

Timber Sale Bid Form

I have examined the timber offered for sale by Jefferson County Soil & Water Conservation District on Jefferson County Reforestation Land located in the Town Of Worth, Jefferson County, New York, and hereby bid the following price:

Total Bid Amount is \$ _____

_____ **dollars and** _____ **cents.**

Name: _____

Signature: _____

Address: _____

Phone Number _____

Bids must be received by 2:30 P.M. August 25, 2025.

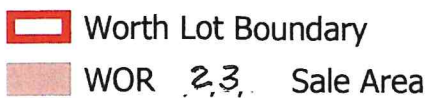
Send bids to:

Jefferson County Soil & Water Conservation District

25451 State Route 12

Watertown, New York 13601

Clearly mark the envelope "Worth Stand 23 "Timber Sale Bid".



Worth Stand 23 Timber Sale Map

